



10 Beresford Avenue BERESFIELD NSW

2 1 1

Perfectly positioned in the heart of Beresfield, this beautifully presented brick and tile residence offers the ideal combination of low maintenance living, modern comfort and practical design.

Custom designed by Cronans and approximately 13 years young, this quality home is perfect for downsizers, first home buyers, investors or anyone chasing an easy-care lifestyle without compromising on space or convenience.

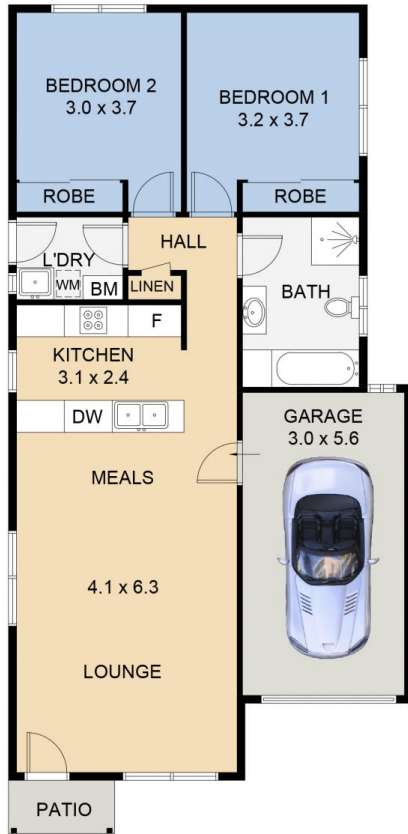
Boasting approximately 83.9sqm of internal living and 105.97sqm of total floor area including the garage and patio, the thoughtfully designed floorplan offers open plan living and dining, complemented by engineered hybrid flooring, split system air conditioning and ceiling fans

[For full version visit the website](https://www.dowlingnewcastlehunter.com.au)

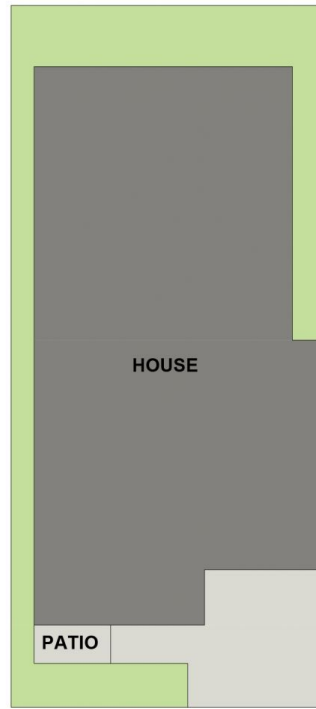
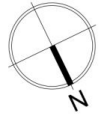
Type : House
Price : SELLING \$670,000 - \$700,000
Building Size : 84 sqm
View : <https://www.dowlingnewcastlehunter.com.au/sale/nsw/hunter-valley-lower/beresfield/residential/house/8705133>



Rob McCorriston
0406121166



SITE PLAN
(Not to Scale)



BERESFORD AVENUE

10 BERESFORD AVENUE BERESFIELD

DISCLAIMER: FLOOR PLAN MEASUREMENTS ARE APPROXIMATE AND ARE FOR ILLUSTRATIVE PURPOSES ONLY. YOU SHOULD CONDUCT A CAREFUL INDEPENDENT INVESTIGATION OF THE PROPERTY TO DETERMINE SUITABILITY FOR YOUR SPACE REQUIREMENTS.