



## 115 Grandview Road New Lambton Heights NSW

4 🚗 2 🚗 2 🚗

Privately positioned in a peaceful, elevated pocket of sought-after New Lambton Heights, this substantial brick-and-tile tri-level residence delivers the space, flexibility and lifestyle that growing or multi-generational families crave. With generous proportions, multiple living areas and a resort-style pool, the home is perfectly designed for both everyday comfort and large-scale entertaining.

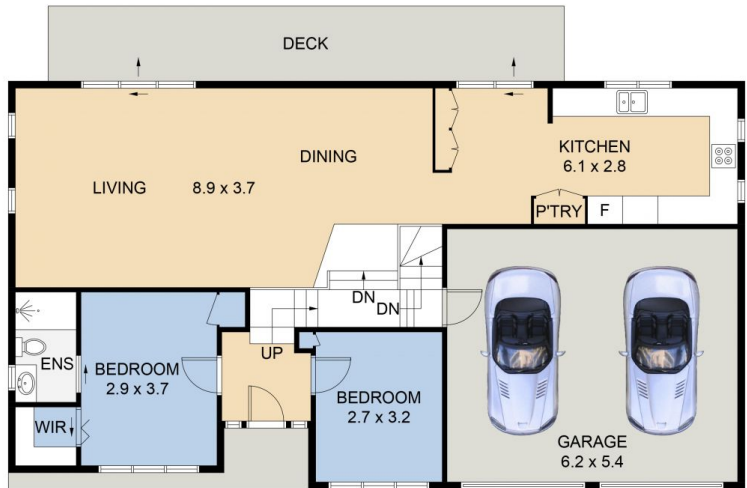
The upper level is the heart of the home, where light-filled open plan living and dining areas flow to a south-facing deck capturing tranquil leafy views. A beautifully updated kitchen with quality European appliances provides both style and practicality, while the main bedroom offers a private retreat complete with walk-in robe and ensuite.

[For full version visit the website](#)

**Type** : House  
**Price** : \$1,010,000 - \$1,100,000  
**Building Size** : 178 sqm  
**Land Size** : 636 sqm  
**View** : <https://www.dowlingnewcastlehunter.com.au/sale/nsw/newcastle-region/new-lambton-heights/residential/house/8630913>

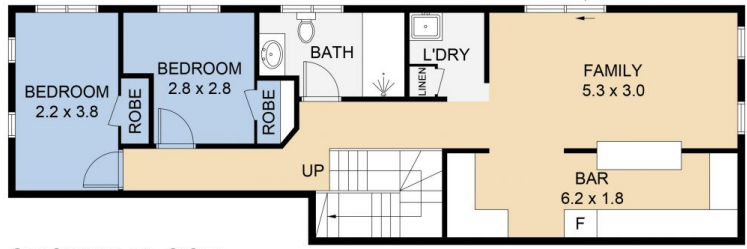


Bob McGarrister



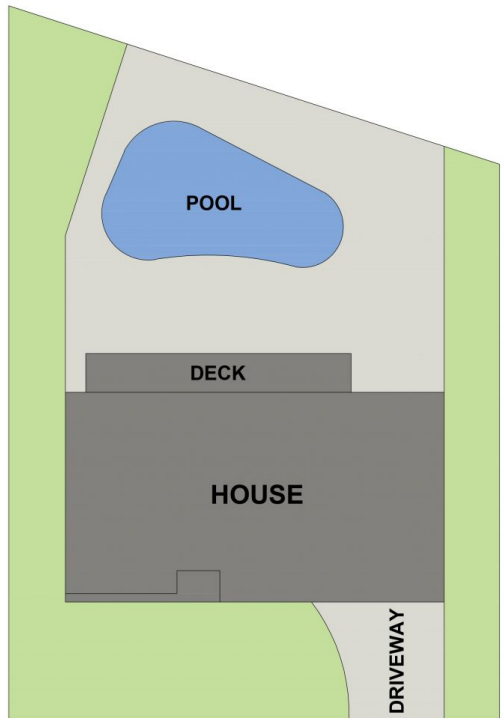
**LEVEL 2**

**LEVEL 1**



**GROUND FLOOR**

**SITE PLAN**  
(Not to Scale)



**115 GRANDVIEW ROAD**

**115 GRANDVIEW ROAD NEW LAMBTON HEIGHTS**

DISCLAIMER: FLOOR PLAN MEASUREMENTS ARE APPROXIMATE AND ARE FOR ILLUSTRATIVE PURPOSES ONLY. YOU SHOULD CONDUCT A CAREFUL INDEPENDENT INVESTIGATION OF THE PROPERTY TO DETERMINE SUITABILITY FOR YOUR SPACE REQUIREMENTS.