



11/27 Railway Street MEREWETHER NSW

1 1 1

This beautifully presented top floor unit is conveniently located in Newcastle's prominent suburb of Merewether. Surrounded by your choice of beaches, shops and parks, this unit is perfect for a professional single or couple.

Features include:

- Over-sized bedroom with built-in wardrobe and ceiling fan.
- Air-conditioned lounge area.
- Sun-filled dining room.
- Stylish kitchen with gas cooking and built-in breakfast bar.
- Retro bathroom with laundry space.
- Designated single carport.

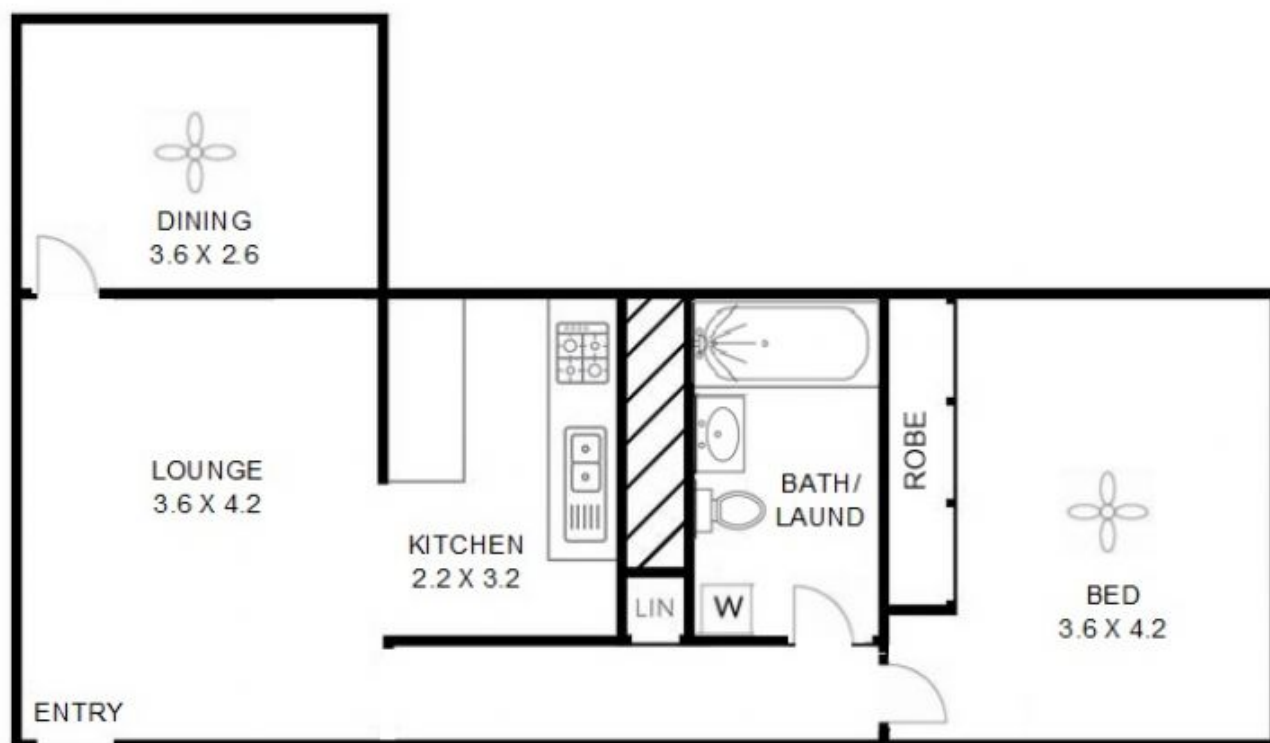
View : <https://www.dowlingnewcastlehunter.com.au/lease/nsw/newcastle-region/merewether/residential/house/7945459>



Samantha Coggan
02 4966 5399

Applications can be submitted through 2Apply or

<https://www.dowlingnewcastlehunter.com.au>



11/27-28 RAILWAY ST, MEREWETHER

DISCLAIMER: FLOOR PLAN MEASUREMENTS ARE APPROXIMATE AND ARE FOR ILLUSTRATIVE PURPOSES ONLY. YOU SHOULD CONDUCT A CAREFUL INDEPENDENT INVESTIGATION OF THE PROPERTY TO DETERMINE SUITABILITY FOR YOUR SPACE REQUIREMENTS.