




DOWLING

PROPERTY



1/22 Chaucer Street BERESFIELD NSW

3  2  1 

Embrace the low maintenance lifestyle and the convenience of being in arguably one of the Hunters most central suburbs which is just 24 minutes to Newcastle CBD, 15 minutes to Greenhill's Shopping Centre and just a 10-minute walk to Beresfield business district.

Welcome to 1/22 Chaucer Street, Beresfield.

Vibrant, light filled & just 3 year's young, this 3-bedroom townhouse is set within an amazing location of which you will instantly be impressed with the practicality of the floorplan, the generous living spaces, the open plan layout and a seamless flow of indoor living meets outdoor entertaining.

Features Include:

Price : \$ 600,000

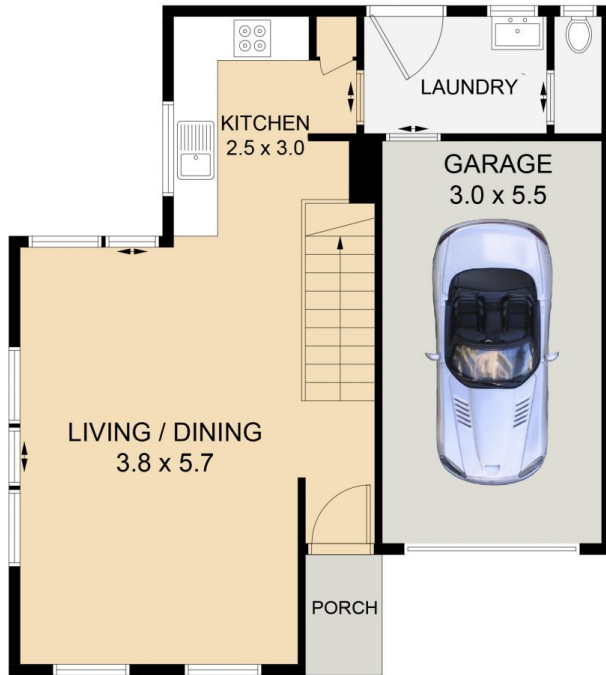
View : <https://www.dowlingnewcastlehunter.com.au/sale/nsw/hunter-valley-lower/beresfield/residential/to-wnhouse/7915466>



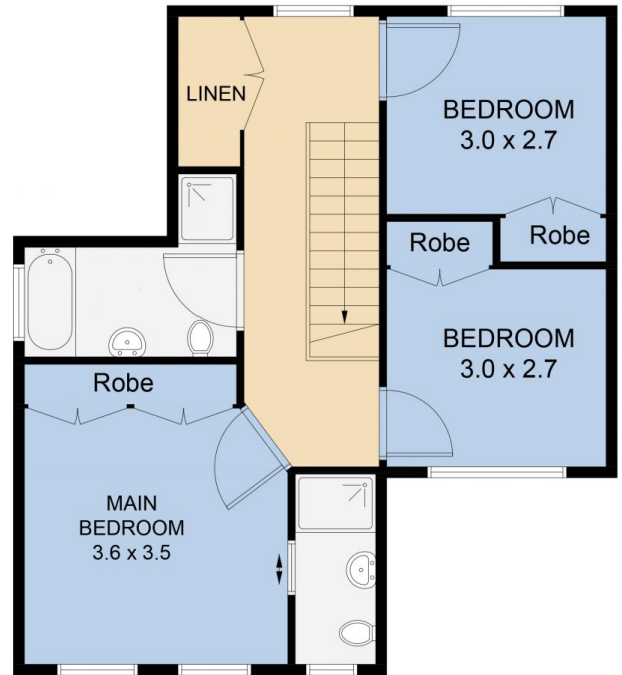
Rob McCorriston
0406121166

<https://www.dowlingnewcastlehunter.com.au>

GROUND FLOOR



FIRST FLOOR



1/22 CHAUCER STREET, BERESFIELD

DISCLAIMER: FLOOR PLAN MEASUREMENTS ARE APPROXIMATE AND ARE FOR ILLUSTRATIVE PURPOSES ONLY. YOU SHOULD CONDUCT A CAREFUL INDEPENDENT INVESTIGATION OF THE PROPERTY TO DETERMINE SUITABILITY FOR YOUR SPACE REQUIREMENTS.